



# SIGNATURE

## REFRIGERATOR TABLE TOP

---

S R T 1 0 0 4 X

## TABLE OF CONTENTS

<b>SAFETY INFORMATION</b>	-41-
<b>OVERVIEW</b>	-55-
<b>REVERSE DOOR</b>	-56-
<b>INSTALLATION</b>	-60-
<b>DAILY USE</b>	-62-
<b>TECHNICAL SPECIFICATIONS</b>	-75-



THIS PRODUCT IS FOR HOUSEHOLD USE ONLY!

Please read these instructions carefully before the first use of this product and save this for your future reference.

## SAFETY INFORMATION

- In the interest of your safety and to ensure the correct use, before installing and first using the appliance, read this user manual carefully, including its hints and warnings. To avoid unnecessary mistakes and accidents, it is important to ensure that all people using the appliance are thoroughly familiar with its operation and safety features. Save these instructions and make sure that they remain with the appliance if it is moved or sold, so that everyone using it through its life will be properly informed on appliance use and safety. For the safety of life and property keep the precautions of these user's instructions as the manufacturer is not responsible for damages caused by

omission. If the supply cord is damaged, it must be replaced by the manufacturer, its service agent or similarly qualified persons in order to avoid a hazard.

- Regarding the information pertaining to the installation, handling, maintenance, servicing and disposal of the appliance, thanks to refer to the below paragraph of the manual.

- Always handle the appliance to avoid any damage.

- Disposal of the appliance

To prevent possible harm to the environment or human health from uncontrolled waste disposal, recycle it responsibly to promote the sustainable reuse of material resources. And the disposal should only be done through public collection points. Old refrigerators can contain CFC that destroy the ozone; contact the waste treatment center nearest your home for more details on the correct procedures for disposal.

- Appliances should place on a horizontal floor and keep the ventilation freely. Don't try to replace or repair any components by yourself, ask the service agency for help if necessary.

**Children and vulnerable people safety**

- This appliance can be used by children aged from 8 years and above and persons with reduced physical, sensory or mental capabilities or lack of experience and knowledge if they have been given supervision or instruction concerning use of the appliance in a safe way and understand the hazards involved. Children shall not play with the appliance. Cleaning and user maintenance shall not be made by children without supervision.
- Children should be supervised to ensure that they do not play with the appliance.
- Children aged from 3 to 8 years are allowed to load and unload this

appliance.

- Cleaning and user maintenance shall not be made by children unless they are aged from 8 years and above and supervised.

- Keep all packaging well away from children. There is risk of suffocation.

- If you are discarding the appliance pull the plug out of the socket, cut the connection cable (as close to the appliance as you can) and remove the door to prevent playing children to suffer electric shock or to close themselves into it.

- If this appliance featuring magnetic door seals is to replace an older appliance having a spring lock (latch) on the door or lid, be sure to make that spring lock unusable before you discard the old appliance. This will prevent it from becoming a death trap for a child.

**General safety**

**⚠ WARNING !**Keep ventilation

openings, in the appliance enclosure or in the built-in structure, clear of obstruction.

⚠ **WARNING!** Do not use mechanical devices or other means to accelerate the defrosting process, other than those recommended by the manufacturer.

⚠ **WARNING!** Do not damage the refrigerant circuit.

⚠ **WARNING!** Do not use other electrical appliances (such as ice cream makers) inside of refrigerating appliances, unless they are approved for this purpose by the manufacturer.

⚠ **WARNING!** Do not touch the light bulb if it has been on for a long period of time because it could be very hot.1)

⚠ **WARNING!** When positioning the appliance, ensure the supply cord is not trapped or damaged.

⚠ **WARNING!** Do not locate multiple portable socket-outlets or portable power suppliers at the rear of the appliance.

- Do not store explosive substances such as aerosol cans with a flammable propellant in this appliance.

- The refrigerant isobutane (R600a) is contained within the refrigerant circuit of the appliance, a natural gas with a high level of environmental compatibility, which is nevertheless flammable.

- During transportation and installation of the appliance, be certain that none of the components of the refrigerant circuit become damaged.

- avoid open flames and sources of ignition.

- thoroughly ventilate the room in which the appliance is situated.

- It is dangerous to alter the specifications or modify this product in any way. Any damage to the cord may cause a short circuit, fire and/or electric shock.



- This appliance is intended to be used in household and similar applications such as

- staff kitchen areas in shops, offices and other working environments;

- farm houses;

- by clients in hotels, motels and other residential type environments ;

- bed and breakfast type environments;

**⚠ WARNING!** Any electrical components (plug, power cord, compressor and etc.) must be replaced by a certified service agent or qualified service personnel.

**⚠ WARNING!** The light bulb supplied with this appliance is a “special use lamp bulb” usable only with the appliance supplied. This “special use lamp” is not usable for domestic lighting.1)

1) If there is a light in the compartment.

- Power cord must not be lengthened.

- Make sure that the power plug is not squashed or damaged by the back of the appliance. A squashed or damaged power plug may overheat and cause a fire.

- Make sure that you can come to the mains plug of the appliance.


- Do not pull the mains cable.

- If the power plug socket is loose, do not insert the power plug. There is a risk of electric shock or fire.

- You must not operate the appliance without the lamp.

- This appliance is heavy. Care should be taken when moving it.

- Avoid prolonged exposure of the appliance to direct sunlight.

 **WARNING!** To avoid a hazard due to instability of the appliance, it must be fixed in accordance with the instructions.

Regarding the instructions for the replacement of the bulb, please refer to below paragraphs of this manual

To avoid contamination of food, please respect the following instructions

- Opening the door for long periods can cause a significant increase of the temperature in the compartments of the appliance.
- Clean regularly surfaces that can come in contact with food and accessible drainage systems.
- Clean water tanks if they have not been used for 48h; flush the water system connected to a water supply if water has not been drawn for 5 days.
- Store raw meat and fish in suitable containers in the refrigerator, so that it is not in contact with or drip onto other food.

Two-star frozen-food compartments (if they are presented in the appliance) are suitable for storing pre-frozen food, storing or making ice-cream and making ice cubes.

- One-, two- and three -star compartments (if they are presented in the appliance) are not suitable for the freezing of fresh food.
- If the appliance is left empty for long periods, switch off, defrost, clean, dry and leave the door open to prevent mould developing within the appliance.

## Care and cleaning

- Before maintenance, switch off the appliance and disconnect the mains plug from the mains socket.
- Do not clean the appliance with metal objects.

## Installation

**Important!** For electrical connection carefully follow the instructions given in specific paragraphs.

- Unpack the appliance and check if there are damages on it. Do not connect the appliance if it is damaged. Report possible damages immediately to the place you bought it. In that case retain packing.
- It is advisable to wait at least four hours before connecting the appliance to allow the oil to flow back in the compressor.
- Adequate air circulation should be

around the appliance, lacking this leads to overheating. To achieve sufficient ventilation follow the instructions relevant to installation.

- Wherever possible the spacers of the product should be against a wall to avoid touching or catching warm parts (compressor, condenser) to prevent possible burn.

- The appliance must not be located close to radiators or cookers.

- Make sure that the mains plug is accessible after the installation of the appliance.

## **Service**


- Any electrical work required to do the servicing of the appliance should be carried out by a qualified electrician or competent person.

- This product must be serviced by an authorized Service Center, and only genuine spare parts must be used.

## **Energy saving**

- If electricity goes off, don't open the door(s);
- Don't open the door(s) frequently;
- Don't keep the door(s) open for too long time;
- Don't set the thermostat on exceeding cold temperatures;

## **Environment Protection**

 This appliance does not contain gasses which could damage the ozone layer, in either its refrigerant circuit or insulation materials. The appliance shall not be discarded together with the urban refuse and rubbish. The insulation foam contains flammable gases: the appliance shall be disposed according to the appliance regulations to obtain from your local authorities. Avoid

damaging the cooling unit, especially the heat exchanger. The materials used on this appliance marked by the symbol ♻️ are recyclable.

### **Packaging materials**

The materials with the symbol ♻️ are recyclable. Dispose the packaging in a suitable collection containers to recycle it.

### **Disposal of the appliance**

1. Disconnect the mains plug from the mains socket.
2. Cut off the mains cable and discard it.

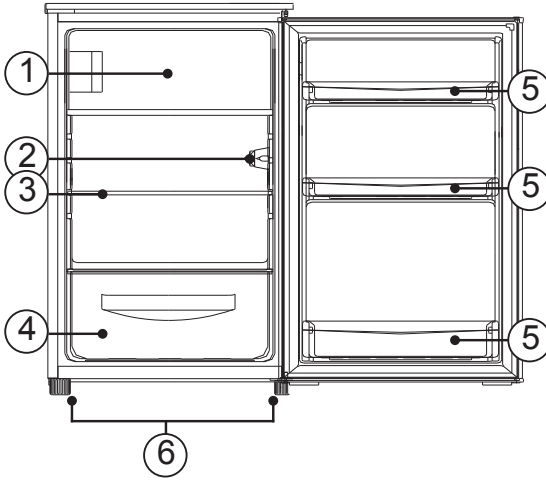


**⚠️ WARNING!** Please keep the product far away fire source during using, service and disposal. There are flammable materials at the back of the appliance.

Pay attention to the symbol “Risk of fire – flammable material” which is located on rear of the appliance.



## OVERVIEW



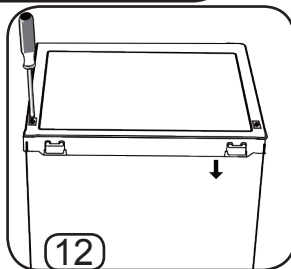
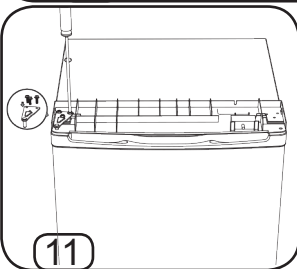
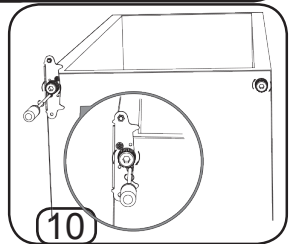
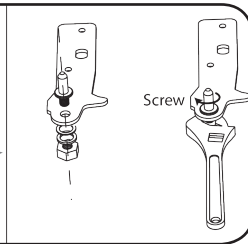
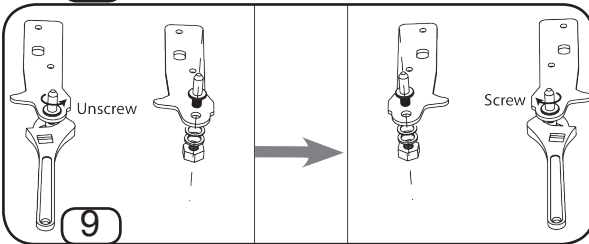
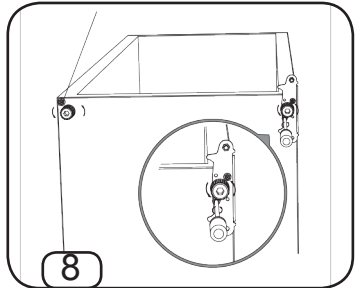
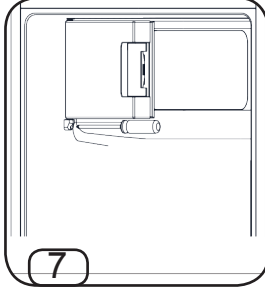
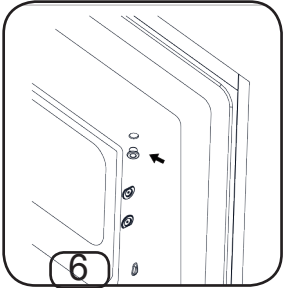
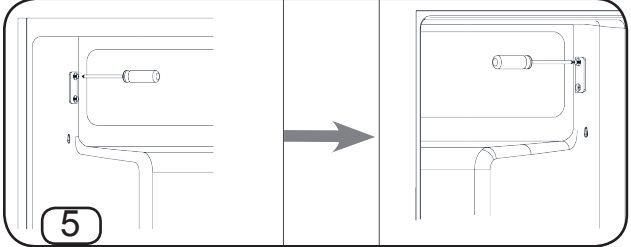
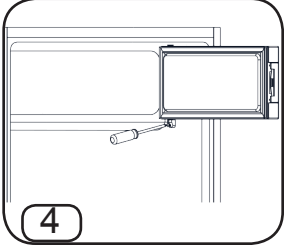
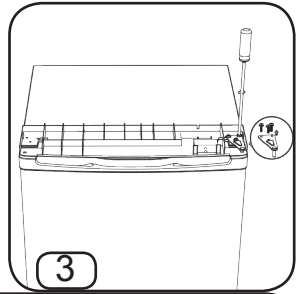
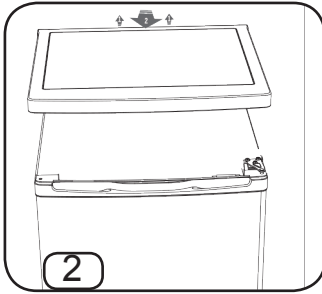
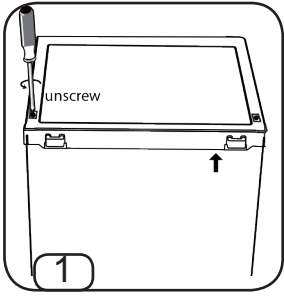
### PARTS

1. Freezer compartment
2. Thermostat and light
3. Glass shelf
4. Vegetable drawer
5. Door balcony
6. Levelling feet

## REVERSING THE DOOR

### Caution:

- Make sure that the appliance is empty and disconnected from the power net.
  - To reverse the door, you need to tip the appliance backwards. Make sure that the appliance can lean on something firm and stable, so that it does not slip away while reversing the door.
  - All removed objects are still needed to reinstall the reversed door.
  - Do not lay the appliance flat, this could damage the cooling system.
  - It is recommended to execute the assembly with 2 people.
1. Remove two screws at rear side of top cover.
  2. Remove top cover and place it aside.
  3. Unscrew top hinge and then remove door and place it on a soft pad to avoid scratch.
  4. Unscrew bottom hinge of freezer door. Then remove the door and place it on a soft pad to avoid scratch.
  5. Move door lock from left side to right side. Move the two middle hole covers from the one side to the other.
  6. Move hinge hole cover from right side to left side.
  7. Rotate freezer door and place hinge side at left side. And then fix the door by holder.
  8. Unscrew bottom hinge. Then remove the adjustable feet from both side.
  9. Unscrew and remove the bottom hinge pin, turn the bracket over and replace it.
  10. Fit the bracket fitting on the left side and install the bottom hinge pin. Replace both adjustable feet.
  11. Place the door back on. Ensure the door is aligned horizontally and vertically, so that the seals are closed on all sides before finally tightening the top hinge.
  12. Put the top cover and fix it with 2 screws on the back.

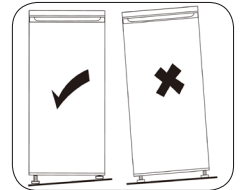


## INSTALLATION

### Caution:

- Unpack the appliance and check whether the appliance has suffered any damages. Do not connect the appliance to the power net if it is damaged.
- It is recommended to wait 4 hours before connecting the appliance to a socket, so that the oil can flow back to the compressor.
- There should be adequate air circulation around the appliance, so that it does not overheat.
- Do not place the appliance too close to a radiator or stove.
- Make sure that after installation, you still have access to the power plug.
- Place the appliance in an area with an ambient temperature between 16°C and 32°C.

F. Make sure that there is enough room to swing open the door. Leave a space of at least 5 cm at both sides of the appliance. Leave a space of at least 10 cm between the top of the appliance and any overhanging wall units. Caution: it is better not to have any overhanging wall units above the appliance.



G Make sure that the appliance stands up straight. Use the levelling feet at the bottom of the appliance to adjust.

## BEFORE THE FIRST USE

Clean the inside of the appliance and all the accessories with lukewarm water and some neutral soap. Dry thoroughly before using the appliance for the first time.

Do not use any detergents or abrasive powders as they may damage the finish.

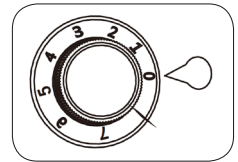
## USE

### Caution:

- Do not place any hot objects onto the plastic parts of the appliance.
- Do not place anything directly against the rear wall inside the appliance.
- Frozen foods should not be frozen again once they have been thawed.
- Do not place any sparkling or fizzy drinks inside the freezer. This causes pressure and may cause the container to explode.

### Temperature setting

Plug in the appliance. The temperature can be set with the thermostat knob. There are 8 settings. 1 is the warmest setting, 7 is the coldest. When it is set to 0, the appliance is switched off.



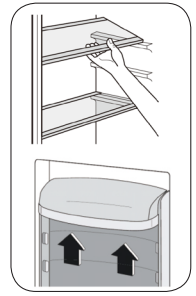
### Freezer

- The freezing process takes 24 hours. During this period, do not add any other foods that need to be frozen.
- If the freezer has not been used for a longer period of time and is started up again, it should be operational for at least 2 hours before you can place food inside the freezer that needs to be frozen.
- Important: if the freezer thaws by accident - for example in case of a power outage - the frozen foods need to be consumed quickly or cooked immediately.

### Accessories

1. The appliance is equipped with a removable, glass shelf. The shelf can be placed at different heights.

2. The door balconies can be placed at different heights inside the door. Gradually lift the balconies to remove them and slide them back into the desired position.

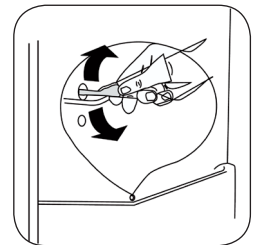


### Energy saving tips

- Do not place any warm foods inside the appliance.
- Do not place the different objects too close together, as this restricts the air circulation.
- Make sure that there is nothing placed directly against the rear wall.
- If the electricity should be cut off, keep the doors closed.
- Do not open the doors too often.
- Do not open the doors too long.
- Do not set the thermostat to temperatures that are too cold.

### CLEANING AND MAINTENANCE

- Switch off and unplug the appliance before cleaning it. Regularly clean the appliance.
- Do not clean the appliance with any metal objects.
- Do not use any aggressive or abrasive cleaners.
- Remove the food from the freezer and preserve it - well covered - in a cool place.
- Clean the appliance and the accessories with a cloth and lukewarm water. Wipe again with fresh water and dry thoroughly.
- Check the drain of the appliance regularly. You can find the drain opening inside the fridge, at the rear wall, behind the lower shelf. Clean the drain when needed. If the drain is blocked, thaw water will flow into the refrigerator.



## Thawing the freezer

Excessive ice inside the freezer should be removed. Do not use any sharp objects to remove the ice. Use a plastic scraper. If the ice is too thick to be scraped off, then thaw the freezer as follows:

1. Unplug the appliance.
2. Remove all the food from the freezer. Caution: once the food is defrosted, you can not freeze it again.
3. Leave the door of the freezer open and place a container at the bottom of the appliance to catch the thaw water.
4. Dry the appliance thoroughly when the defrosting process is finished.
5. Plug in the appliance, so that the appliance can start working again.

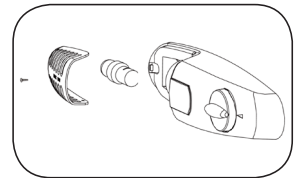
## Replacing the light bulb

Caution: unplug the appliance before replacing the light bulb!

The specifications of the light can be found on the rating label on the appliance.

To replace the light bulb:

1. Set the thermostat knob to 0 to switch off the appliance.
2. Unplug the appliance.
3. Remove the screw from the lamp cover and remove the cover.
4. Unscrew the light bulb.
5. Screw in a new light bulb and place back the cover with the screw.
6. Plug in the appliance.



## **COLDEST ZONE IN THE REFRIGERATOR**

This symbol indicates the location of the coldest zone of the refrigerator,



To ensure the temperatures in this area, do not change the positioning of the shelf.

### **TEMPERATURE INDICATOR SETTING**

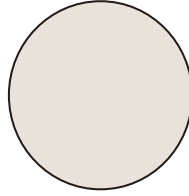
To help you set your refrigerator well, it is equipped with a temperature indicator that will monitor the average temperature in the coldest zone. **WARNING:** This indicator is intended to work only with your refrigerator, do not use it in another refrigerator (in fact, the coldest zone is not the same), or for any other use.

### **CHECKING THE TEMPERATURE IN THE COLDEST ZONE**

With the temperature indicator, you can check regularly that the temperature of the coldest zone is correct. Indeed, the internal temperature of the refrigerator depends on several factors such as the ambient temperature of the room, the amount of food stored and the frequency of door opening. Take these factors into consideration when setting the device.

When the indicator shows « OK », this means that your thermostat is well adjusted and the internal temperature correct.






If the indicator of temperature turns WHITE, this means that the temperature is too high; in this case, increase the refrigerator temperature control setting and wait for 12 hours before performing a new visual inspection of the indicator.

When fresh food has been introduced or the door has been left open, it is possible for the indicator of temperature to turn WHITE after a while.

## Troubleshooting

 **Caution!** Before troubleshooting, disconnect the power supply. Only a qualified electrician or competent person must do the troubleshooting that is not in this manual.

**Important!** There are some sounds during normal use (compressor, refrigerant circulation).

Problem	Possible cause	Solution
Appliance does not work	Appliance is turned off.	Press "Adjust" button for 5 seconds to turn on the appliance.
	Mains plug is not plugged in or is loose	Insert mains plug.
	Fuse has blown or is defective	Check fuse, replace if necessary.
	Socket is defective	Mains malfunctions are to be corrected by an electrician.
The food is too warm.	Temperature is not properly adjusted.	Please look in the initial Temperature Setting section.
	Door was open for an extended period.	Open the door only as long as necessary.
	A large quantity of warm food was placed in the appliance within the last 24 hours.	Turn the temperature regulation to a colder setting temporarily.
	The appliance is near a heat source.	Please look in the installation location section.
Appliance cools too much	Temperature is set too cold.	Turn the temperature regulation knob to a warmer setting temporarily.
Unusual noises	Appliance is not level.	Adjust the wood cabinet if it's not level.
	The appliance is touching the wall or other objects.	Move the appliance slightly.
	A component, e.g. a pipe, on the rear of the appliance is touching another part of the appliance or the wall.	If necessary, carefully bend the component out of the way.
Water on the floor	Water drain hole is blocked.	See the Cleaning section.

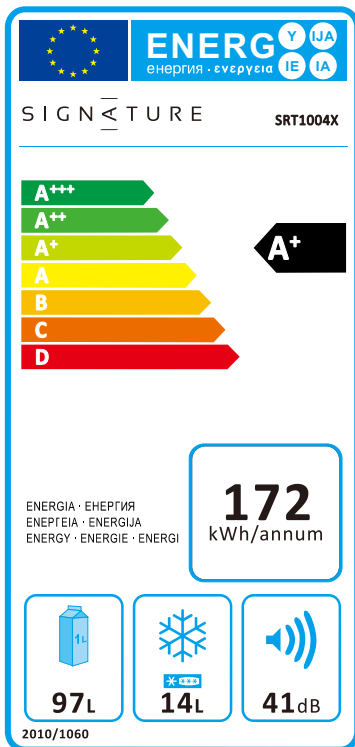
If the malfunction shows again, contact the Service Center.

### Usage instructions

Refrigerator compartments (if any)	Type of food
Door or balconies of fridge compartment	Foods with natural preservatives, such as jams, juices, drinks, condiments, eggs.
Crisper drawer (salad drawer)	Fruits, herbs and vegetables should be placed separately in the crisper bin.
Bottom fridge shelf Chiller drawer	Raw meat, poultry, fish (for short-term storage)
Middle fridge shelf	Dairy products
Top fridge shelf	Foods that do not need cooking, such as ready-to-eat foods, deli meats, leftovers.
1-star compartment	To store pre frozen foods few hours
2-star compartment	To store pre frozen foods few days
3-star compartment	To store pre-frozen foods few days/weeks
4-star freezer drawer/shelf	To freeze fresh foods and for long-term storage. <ul style="list-style-type: none"> <li>· Bottom drawer/shelf: raw meat, poultry, fish.</li> <li>· Middle drawer/shelf: vegetables, chips.</li> <li>· Top drawer/shelf: ice cream, frozen fruit, frozen baked goods.</li> </ul>

## TECHNICAL SPECIFICATIONS

Commercial reference :	<b>TABTOP SRT1004X</b> 4894223220613
Household refrigerating appliance model category	Refrigerator table top
Energy efficiency class	A+
<i>A+++ (the highest energy efficiency) to D (the lowest efficiency)</i>	
Annual energy consumption (AEC)	172 kWh/an
<i>Energy consumption of 172 kWh per year, calculated based on the result obtained for 24 hours under standardized test conditions. The actual energy consumption depends on the conditions of use and location of the device.</i>	
<b>Total useful volume</b>	<b>111</b>
- of which compartment for highly perishable goods (l)	
- of which storage compartment of fresh food (l)	97
- of which the wine storage compartment (l)	
- of which cellar compartment (l)	
- of which frozen food storage compartment (l)	14
Number of stars:	4 stars
Lowest temperature of the wine storage compartment	NA
Frost-free	No
Autonomy	10 h
Freezing capacity	2 kg/24h
Climatic class	N/ST This appliance is designed to be used at an ambient temperature between +16°C and +38°C
Noise level	41 dB(A) re 1 Pw
Built-in appliance	No
Product dimensions (H x W x D)	850 x 550 x 580 mm
Installation space (H X W x D)	1150 x 1100 x 1160 mm
Rated voltage	220-240V~
Rated current	0.6A
Rated frequency	50Hz
Lamp power	10W
Protection against electrical shock	I



We decline liability for any damage or accident derived from any use of this product which is not in conformity with the instructions contained in this booklet.

## CORRECT DISPOSAL OF THIS PRODUCT



This marking indicates that this product should not be disposed with other household wastes through out the EU. To prevent possible harm to the environment or human health from uncontrolled waste disposal, recycle it responsibly to promote the sustainable reuse of material resources. To return your used device, please use the return and collection systems or contact the retailer where the product was purchased. They can take this product for environmental safe recycling.



Tous les papiers  
se trient et se recyclent.

BUT INTERNATIONAL  
1 Avenue Spinoza  
77184 Emerainville, France

CKSNT-A01